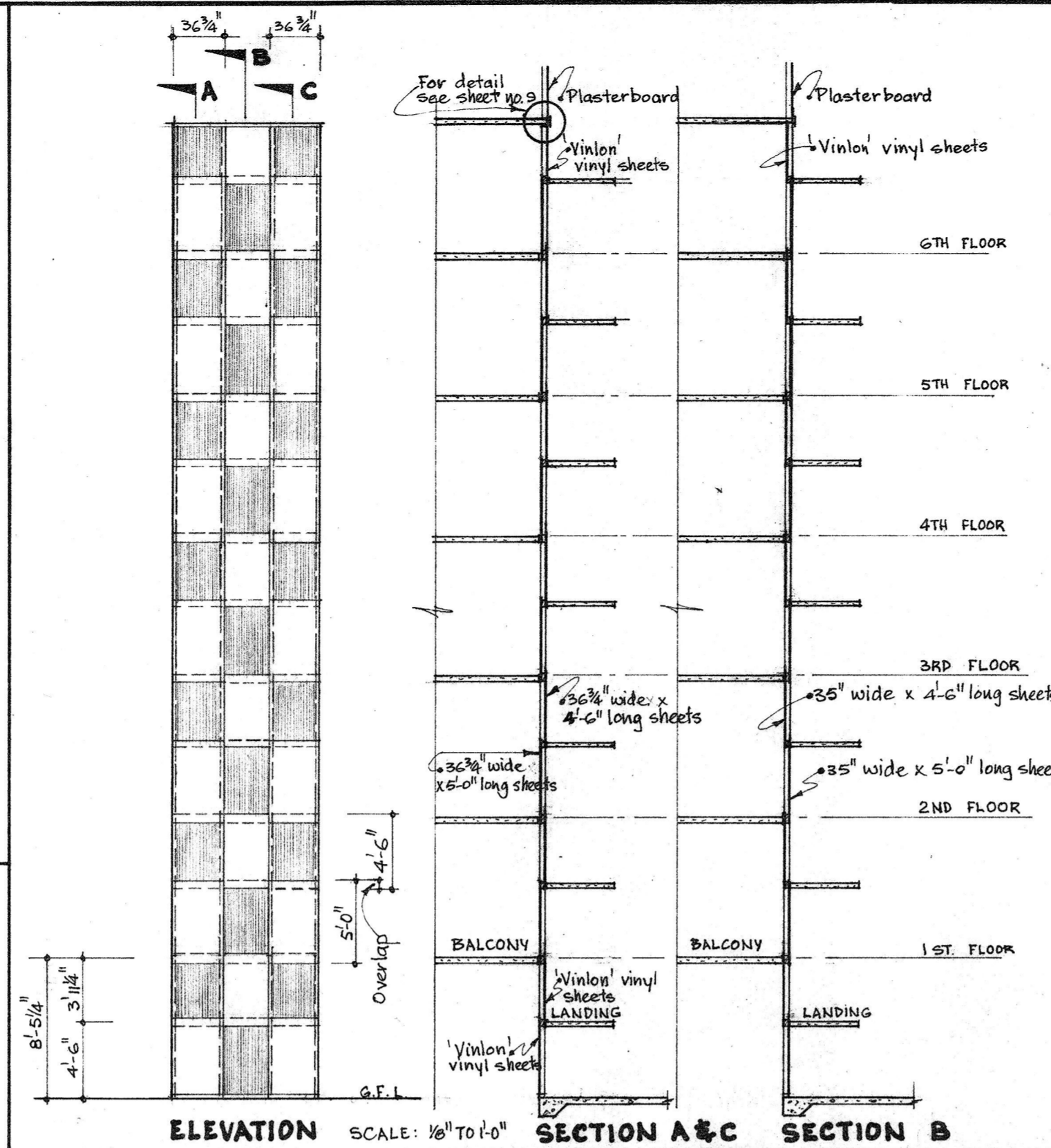


DOOR FURNITURE

- D1 & D4 4" Steel butt hinges
- P.C. { Cylinder night latch
Combined escutcheon & knocker
Self adhesive number plate
Mortice latch & furniture for laundry
and garbage. } To entrance door
to units only.
- D2 3 1/2" Steel butt hinges.
- P.C. Mortice latch and furniture to units.
Mortice lock and furniture to top floor.
- D3 3 1/2" Steel butt hinges.
- P.C. Indicator bolt Efc0 537A
Door closer.
- D5 4" Steel butt hinges.
- P.C. Mortice latch & furniture
Door closer
- D6 3 1/2" Steel butt hinges
- P.C. Mortice latch & furniture.

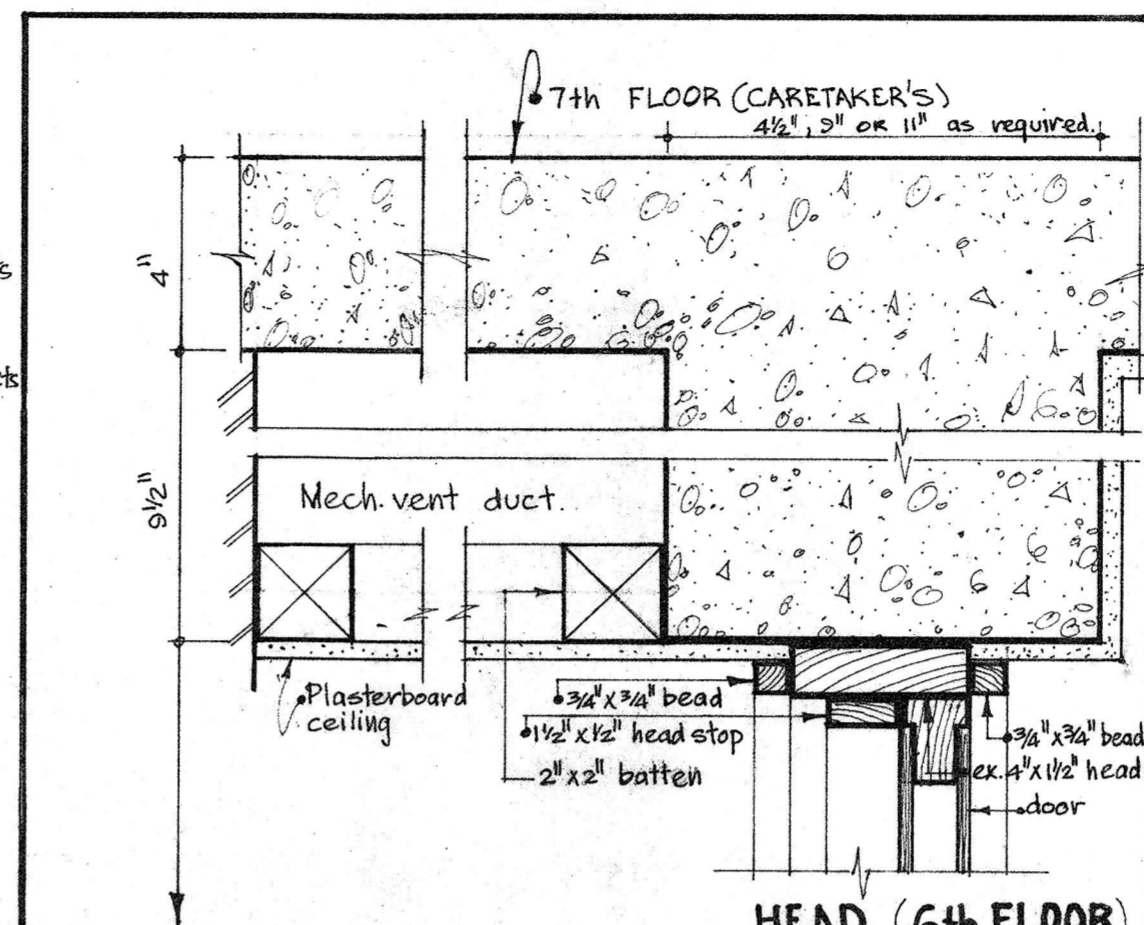
REVISION
DEPART FROM ORIGINAL
3 NO. D2
ADP
1 NO. D7 & 2 NO. D8



VINLON DOUBLE RIB RIGID VINYL SHEET SIZES

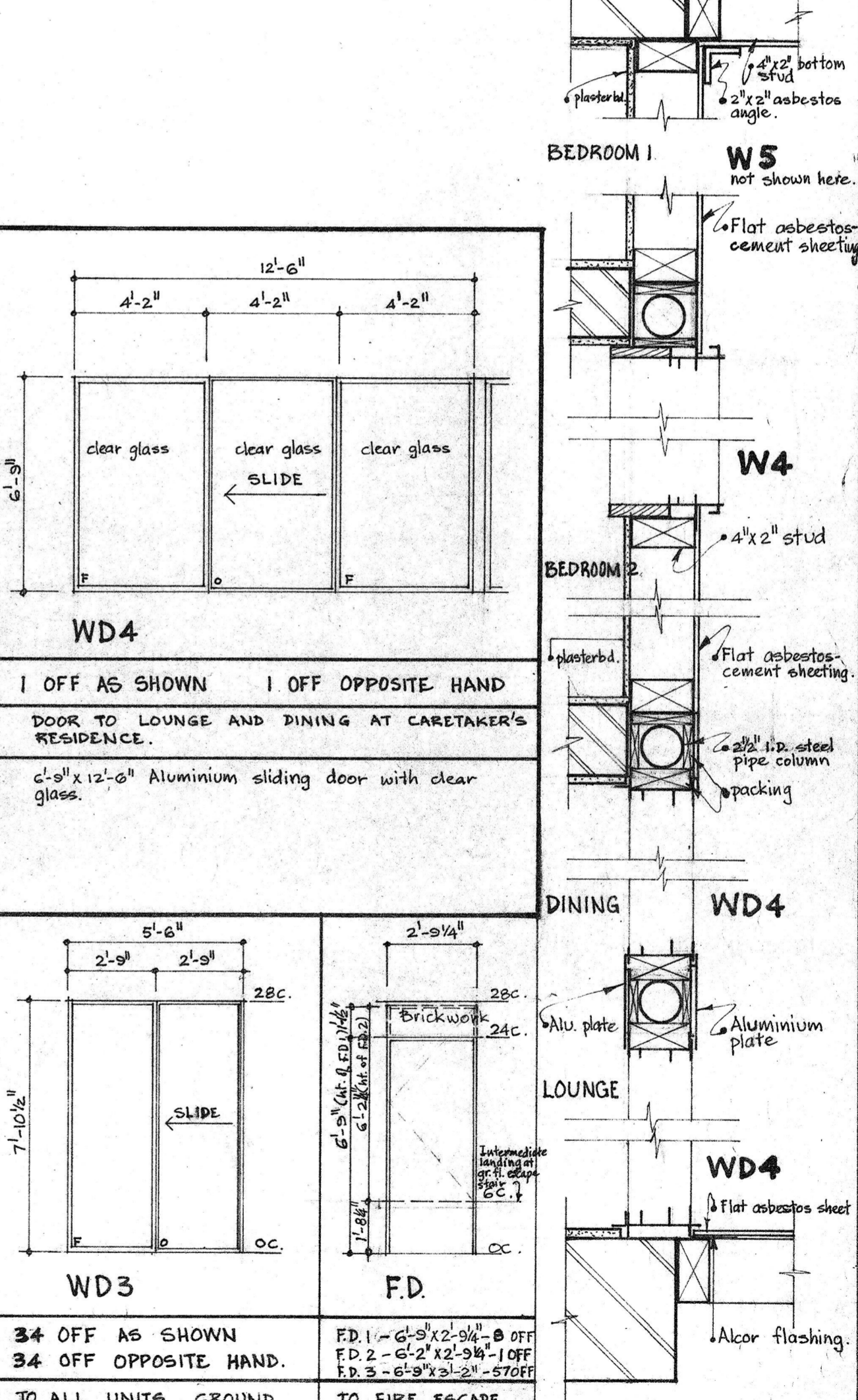
SIDE SHEETS 36 3/4" wide x 5'-0" long & 36 3/4" wide x 4'-6" long
MIDDLE SHEETS 35" wide x 5'-0" long & 35" wide x 4'-6" long.

NOTE:
Sheets in 5'-0" lengths are fixed between Balcony floor (also gr. floor) & Landing.
Sheets in 4'-6" lengths are fixed between Landing & Balcony floor.

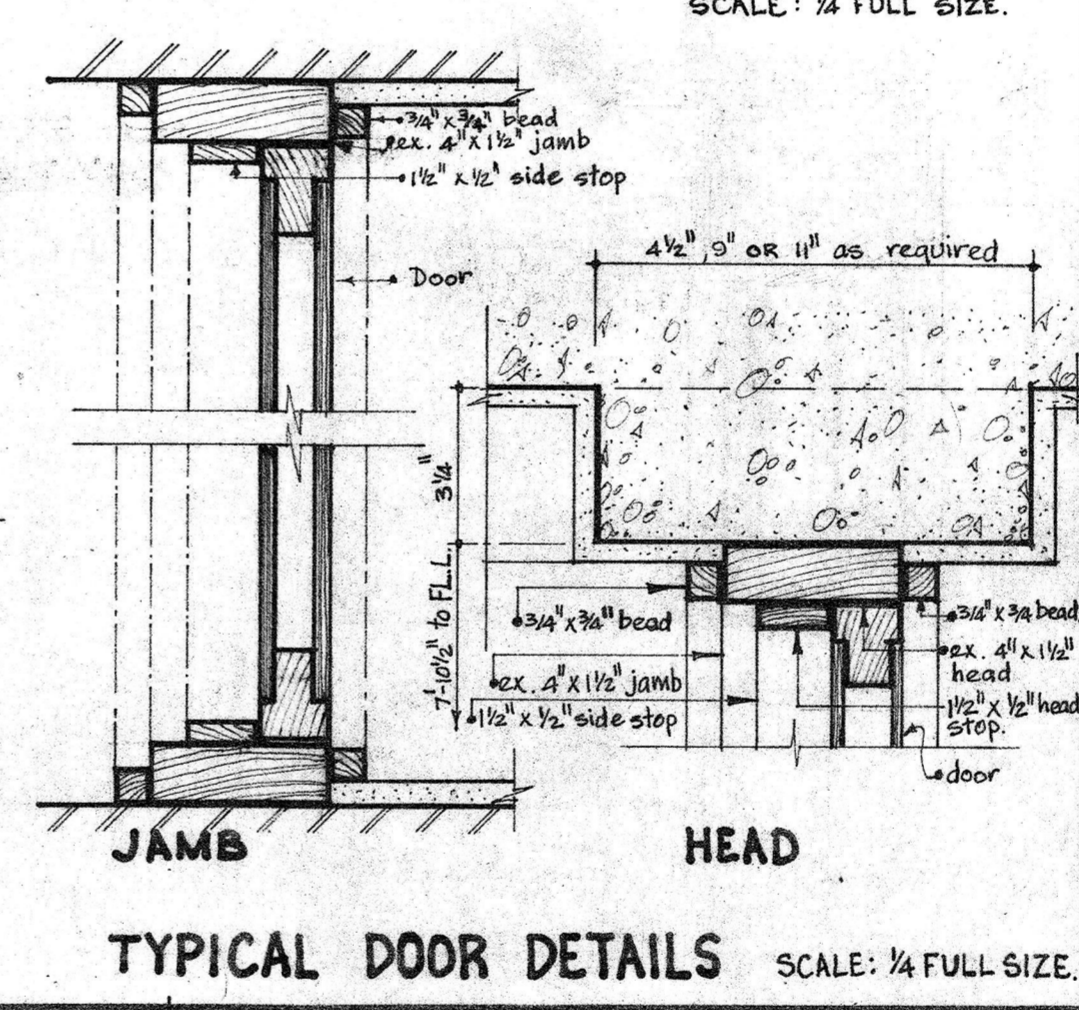


REVISION		
W8	D7	D8
1 OFF	1 OFF	2 OFF
TO LAUNDRY, CARETAKER'S RESIDENCE	TO LAUNDRY CARETAKER'S RESIDENCE	TO MECH. VENT. 7th FLOOR
3'-7 1/8" Aluminium sliding window.	7'-5 1/2" x 2'-9 1/4" Veneer door with clear finish. Was D2 before Laundry added.	6'-0 1/2" x 2'-9 1/4" Veneer door with clear finish. Originally specified as D2.

DETAILS OF WD4, W4 & W5 - CARETAKER'S RESIDENCE.
SCALE: 1/4 FULL SIZE.



WD1	D1 & D4	D2	D3	D5	D6
1 OFF AS SHOWN	D1 8' OFF D4 7' OFF	36" OFF AS SHOWN	57" OFF AS SHOWN	1 OFF AS SHOWN	1 OFF AS SHOWN
AT MAIN ENTRANCE, 1ST FLOOR.	D1 ALL UNITS, GR. TO 6th FLOOR, AT STUDY CARETAKER'S RESIDENCE. D4 TO GARDAGE RM. GR. TO 6th FLOOR.	DOOR TO KITCHEN, BEDRM. AT GR. FL. TO 6th FLOOR. TO MECH. VENT. RM. PASSAGE BEDROOMS 1 & 2 AT CARETAKER'S RESIDENCE.	DOOR TO BATHROOM, GR. FLOOR TO 6th FLOOR. TO STORAGE, BATHROOM AND W.C. AT CARETAKER'S RESIDENCE.	EXTERNAL DOOR TO GROUND FLOOR LAUNDRY.	DOOR TO STORAGE UNDER MAIN STAIRS AT GROUND FLOOR.
Letter boxes are 5 1/2" x 8 3/8" internal dimension except for top row boxes which are 5 1/2" x 10 3/8" internal dimension. Top row has 5 boxes, and there are 10 boxes to each of the other 5 rows. Total 55 boxes. For details, see sheet no. 11.	7'-10 1/2" timber veneer door with clear finish.	7'-10 1/2" timber veneer door with clear finish.	7'-10 1/2" timber veneer door with clear finish.	7'-10 1/2" x 3'-2 1/2" External timber frame door similar in construction to main entrance door. See sheet 11 for details. Painted.	6'-0" x 2'-4 1/2" Timber door, veneer with clear finish.



W1 & W2	W3	W4	W5	W6	W7	WD2	WD3	FD
W1 32 OFF AS SHOWN W2 32 OFF OPPOSITE HAND	2 OFF AS SHOWN 2 OFF OPPOSITE HAND	1 OFF AS SHOWN	1 OFF AS SHOWN	1 OFF AS SHOWN 1 OFF OPPOSITE HAND	2 OFF AS SHOWN	5 OFF AS SHOWN	34 OFF AS SHOWN 34 OFF OPPOSITE HAND.	FD 1 - 6'-5" x 2'-9 1/4" 0 OFF FD 2 - 6'-2" x 2'-9 1/4" 1 OFF FD 3 - 6'-9" x 2'-9 1/4" 2 OFF
W2 14 OFF AS SHOWN W2 15 OFF OPPOSITE HAND W1 TO ALL UNITS, GR. FL. TO 6th FLOOR. W2 AT BATHRM., GROUND FL. TO 6th FLOOR. 3'-4 1/2" x 3'-2 1/2" Aluminium sliding window with flyscreen. W1 with clear glass. W2 with obscure glass. Short lapped glazing for W2 & W1 in entrance unit only.	TO STORAGE, BED-SITTING ROOM, GROUND FLOOR ONLY. 2'-9 1/4" x 5'-6" Aluminium sliding window, clear glass. Flyscreen.	TO BEDROOM 2, CARETAKER'S RESIDENCE ONLY. 2'-9 1/4" x 9'-6" Aluminium sliding window, clear glass. Flyscreen.	TO BEDROOM 1, CARETAKER'S RESIDENCE ONLY. 2'-9 1/4" x 10'-5 1/2" Aluminium sliding window, clear glass. Flyscreen.	TO KITCHEN AND STUDY, CARETAKER'S RESIDENCE ONLY. 3'-7 1/8" x 5'-6" Aluminium sliding window with clear glass. Flyscreen.	TO BATH RM. & W.C., CARETAKER'S RESIDENCE ONLY. 3'-7 1/8" x 2'-9 1/4" Aluminium double hung window with clear glass. Flyscreen.	TO COMMUNAL LOUNGE, 2ND TO 6TH FLOOR. 7'-10 1/2" x 12'-6" Aluminium sliding door with clear glass. Sliding Flyscreen.	TO ALL UNITS, GROUND TO 6th FLOOR. 7'-10 1/2" x 6'-6" Aluminium sliding door with clear glass. Sliding Flyscreen.	TO FIRE ESCAPE STAIR, G.F. ONLY FOR FD2 & ALL FLOORS MAIN STAIR AT 7th FLOOR, FOR FD 1. 7'-10 1/2" x 2'-9 1/4" fire door. Metal frame with 3/16" marine grade plywood facings, both sides painted. NOTE: D2 OPENS OUT FROM INT. LANDING GR. FL. ONLY. INT. LANDING AT CC.

PLAN
SCALE: 1/4 FULL SIZE.

See sheet no. 7 for further details

CONTRACTOR TO CHECK ALL DIMENSIONS ON SITE PRIOR TO COMMENCEMENT OF WORK	SWAN COTTAGE HOMES - PROJECT NO. 12 MULTI-STOREY HOME FOR THE AGED	BOLLIG, ABBOTT AND PARTNERS ARCHITECTS AND TOWN PLANNERS 8 COOK ST, W PERTH TEL 214402	DRAWN: SCL.	JOB NO. 7025	SHEET 10
			CHECKED:		
DOOR & WINDOW SCHEDULE			SCALE: 1/4" TO 1'-0"		